

Be sure to read the manual before using the system

- This manual is the user manual of double pendulum light industrial welding system
- Read the manual carefully first to ensure the correct electrical connection

# BWT30

V30 control box + BWT 30 welding head  
Qilin double pendulum light industrial  
welding system user manual



Shenzhen Qilin Laser Application Technology Co., LTD

Address: Second floor, Building 8, Panmao Industrial Zone, Shuimeng Road, Gongming Village, Gongming Street, Guangming New District, Shenzhen

Tel.: 0755-27999931

Mail:

address: [www.qilinlaser.com](http://www.qilinlaser.com)

## Copyright Statement

Shenzhen Qilin Laser Application Technology Co., LTD. (hereinafter referred to as Qilin Laser) reserves all powers.

Qilin Laser has the patent copyright and intellectual property rights of this product. Without the authorization and permission of Qilin Laser, it shall not directly or indirectly copy, manufacture, process and use the product and its related parts, otherwise Qilin Laser will be investigated for relevant legal liabilities according to law.

Qilin Laser retains the right to modify the documents included in this manual without prior notice, while retaining the right to modify any documents attached to this product.

Users should read this manual carefully when using the products described in this article. Qilin Laser shall not bear the direct, indirect, special, incidental or corresponding losses or liabilities caused by the improper use of this manual or this product. Qilin Laser does not bear the following direct or indirect liabilities or losses:

- User shall improperly use this manual or this product
- The loss caused by the user does not follow the relevant safety operation procedures

The loss caused by natural force makes the machine in the movement dangerous, the user has the responsibility to design an effective error handling and safety protection mechanism in the machine, and Qilin laser has no obligation or responsibility to be responsible for the incidental or corresponding losses caused thereby.

# Certification statement

## — The CE Certification Statement

This product has passed the European Union CE (Communate Europpe) safety, certification, has passed the corresponding conformity assessment procedures and the manufacturer's declaration of conformity, in accordance with the relevant EU directives.

## — ROHS, the certification statement

This product has been approved by the European Union legislation on restricting the use of certain Hazardous ingredients in electronic and Electrical Equipment (Restriction of Hazardous Substances) safety certification, in accordance with the relevant environmental regulations of the European Union.

## — FCC Certification statement

This product has been certified by the Federal Communications Commission (Federal Communications Commission) and complies with the relevant safety regulations of American electronic products.

## security information

When using the system, please ensure that the operation is correct and safe. Some signs or words will be used to remind you of dangerous matters and some important information.



### **danger:**

Represents a serious danger. In the process of use, if the operation is improper or the use method is wrong, it may lead to serious injury or even death, please users and related personnel do not operate easily, until to ensure that the operation method and the correct way of use.



### **warn:**

Indicates that a danger exists. In the process of use, if the operation is improper or the use method is wrong, which may cause injury to the personnel, please do not operate easily, until you ensure that the operation method is correct and the use method is correct.



### **prudent:**

Represents a product potential risk. During use, if the use method is wrong or improper operation, the product or some parts may be damaged. Please users and related personnel do not operate easily until the operation method is correct and the use method is correct before use.

**important:**

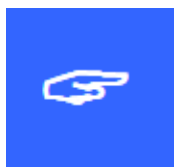
Represents an important information to note during the product. Please do not ignore this information, which provides effective operational help.



This label indicates laser radiation, which will generally be affixed to the product output of laser. Please, be careful of laser and safety when using such equipment.

# Receiving goods, unpacking and inspection

The product uses shock-proof soft packaging. If the package has any external damage marks, please check the damage to the equipment and notify the carrier and the carrier of the damage in written documents.



**important:**

After receiving the product, please check whether the outer package is in good condition, and check whether the product is complete and all parts are intact after unpacking. If any damage is found, please contact the Qilin Laser immediately.

Remove all the goods from the packaging, and keep the packaging materials and wiring spare parts. When dismantling the package and removing the goods,

Please be careful of the goods for safety. After removing the goods, please check if the parts are complete and intact. If any missing parts or parts are damaged, please contact Qilin Laser immediately. If any obvious damage to the equipment, do not install or debug the equipment.

BWT 30 The shipping list of the double pendulum light industrial welding system is shown in the following table: (As the product will be updated and upgraded, the shipping list may also be adjusted)

## BWT 30 Qilin double pendulum light industrial welding head list

	component	quantity	explain
1	BWT 30 Welding head	1	
2	The V 30 control box	1	
3	7-inch LCD screen (HMI)	1	
4	7-inch display cable (DB9 head)	1	
5	Plus or minus 15V power supply	1	

6	Plus or minus 15V power cord	1	
7	24V power cord	1	
8	Urgent stop trigger line	1	
9	Welding head connecting wire, DB15	1	
10	One point three DC line	1	
11	Video line	1	
12	Power extension line	1	
13	Blu-ray adjustable focus for 12V	1	
14	The DC12V power supply	1	
15	laser goggles	1	
16	Coaxial blowing assembly	1	
17	Spare protective lenses	5	
18	caution light	1	
19	monitor	1	
20	Send wire fixtures	1	

 S  
S  
T  
3  
0  
P  
a

**ckaging list (optional)**

	component	quantity	explain
1	SST 30 wire feeder total complete set	1	
2	Send silk hose	2	
3	SST 30 delivery wheel	2	
4	6 Core wire delivery machine wire	1	

# catalogue

<b>Chapter 1 Overview</b>	8
1.1 BWT 30 Qilin double pendulum light industrial welding system brief introduction	9
1.2 Product installation size drawing	9
1.2.1 Touch-screen installation dimensions	9
1.2.2 Control box, installation size of the alarm lamp	10
1.2.3 15V switch power supply installation size	12
<b>Chapter 2. System Wiring</b>	13
2.1 Control box wiring	14
2.2 Double-pendulum light industrial welding head construction	15
2.3 Power joggle	17
2.4 human-computer interface HMI	19
2.5 Laser-decoding interface	19
2.6 Double pendulum industrial welding head interface	20
2.7 Urgent stop trigger line	20
2.8 Fan interface introduction	20
2.9 Control interface of the wire feeder	21
2.10 Laser device control interface	22
2.11 Gas control, air pressure detection interface	23
2.12 Alarm signal interface	24
2.13 Robot-signal interface	24
2.14 PNP & NPN conversion board	25
2.15 Alarm lamp interface	26
2.16 Dial switch	27
<b>Chapter 3 HMI Introduction</b>	28



---

3.1	Human-machine interface function and operation introduction.....	29
3.2	The wire delivery structure is installed and used.....	33
<b>Chapter 4: Notes</b> .....		<b>.35</b>

深圳市麒麟激光应用科技有限公司

# Chapter 1 summary

**The main contents  
of this section are  
as follows:**

- Double pendulum light industrial welding system brief introduction drawing
- Product installation size drawing

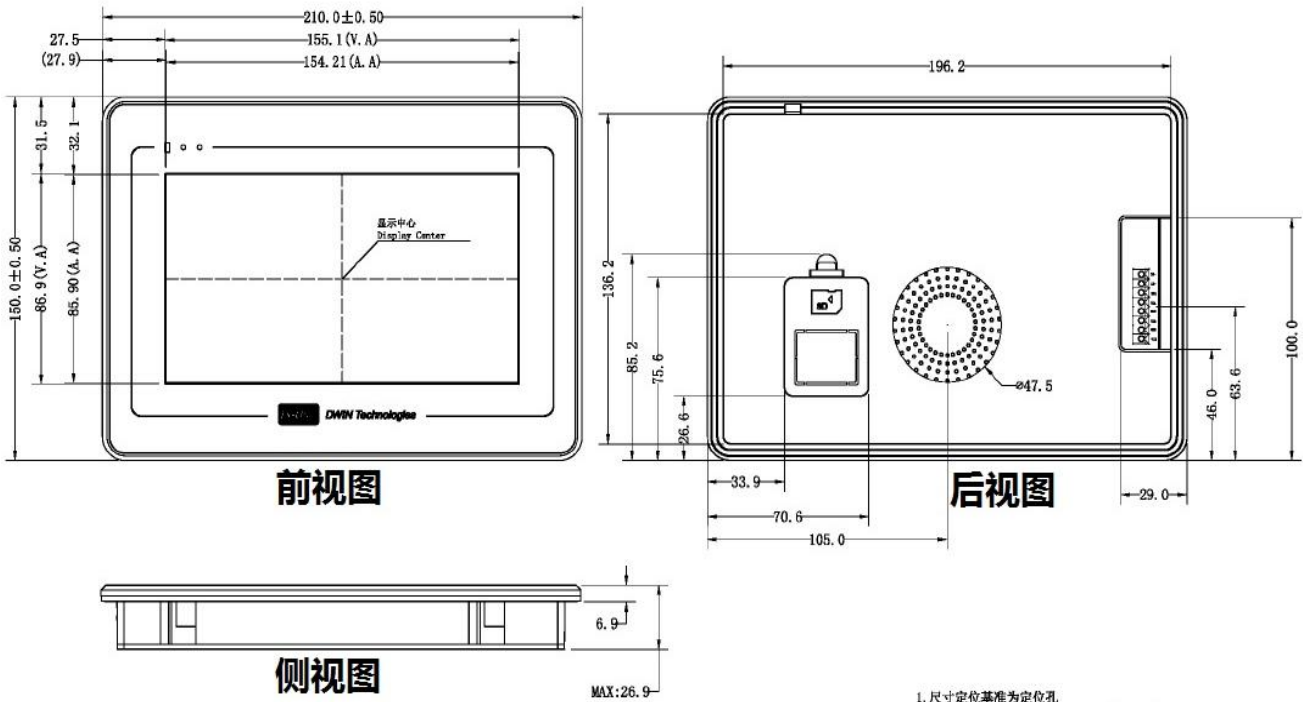
## 1.1 Qilin double pendulum light industrial welding system brief introduction

Qilin double pendulum light industrial welding system is a control system for fiber laser industrial welding developed by Qilin laser. The double vibration lens motor can control seven swing modes: point, line, ring, oval, triangle, eight characters, semicircle. OLED on the welding torch displays the motor operation R signal, supports power slow rise and slow drop, process storage and call, fault alarm indication, laser remote decoding, a variety of safety protection measures and other functions and features.

## 1.2 Product installation size drawing

### 1.2.1 Touch-screen installation dimensions

The installation dimensions of the touch screen are shown below:

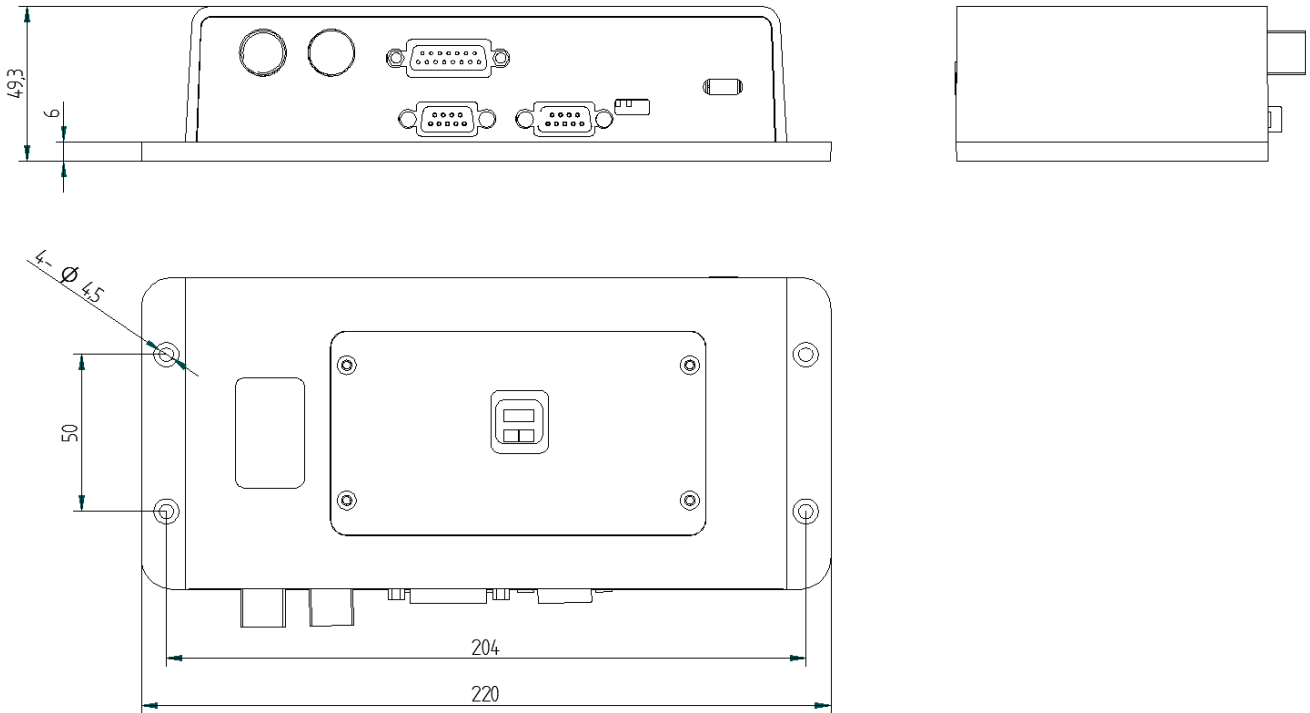


1. 尺寸定位基准为定位孔  
Location hole is used as position reference.
  2. 未标注公差为 $\pm 0.3\text{mm}$   
Unmarked Tolerance is  $\pm 0.3\text{mm}$
- 注: 虚线标注为有效显示区域  
Active area is marked in Dash lines

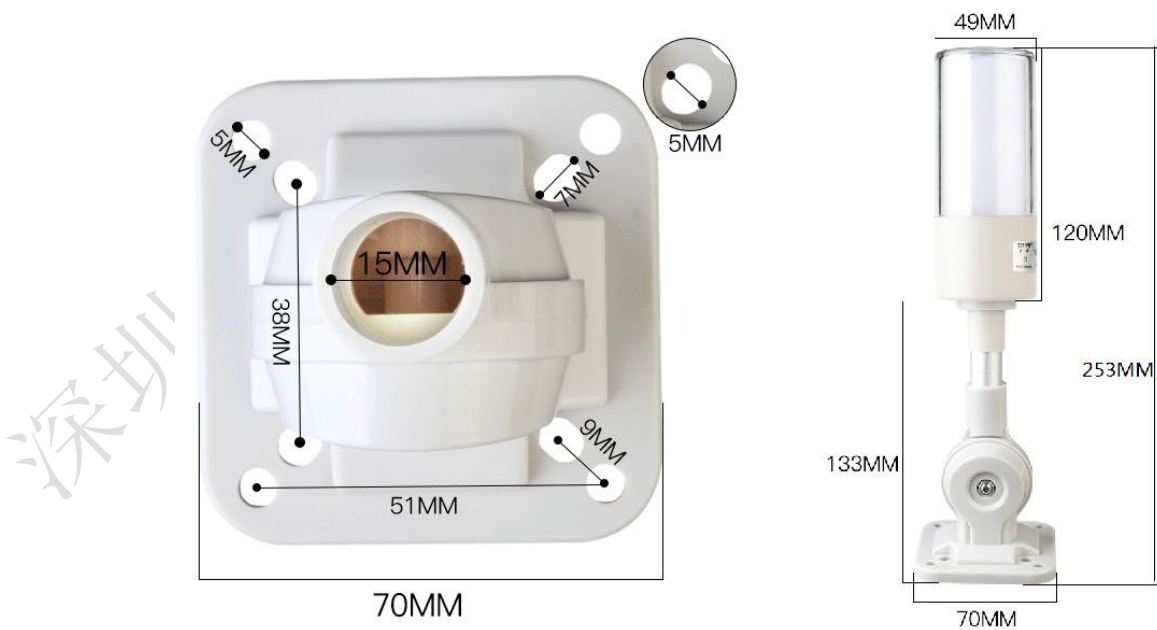
深圳市麒麟激光应用

## 1.2.2 Control box / alarm light, mounting dimensions

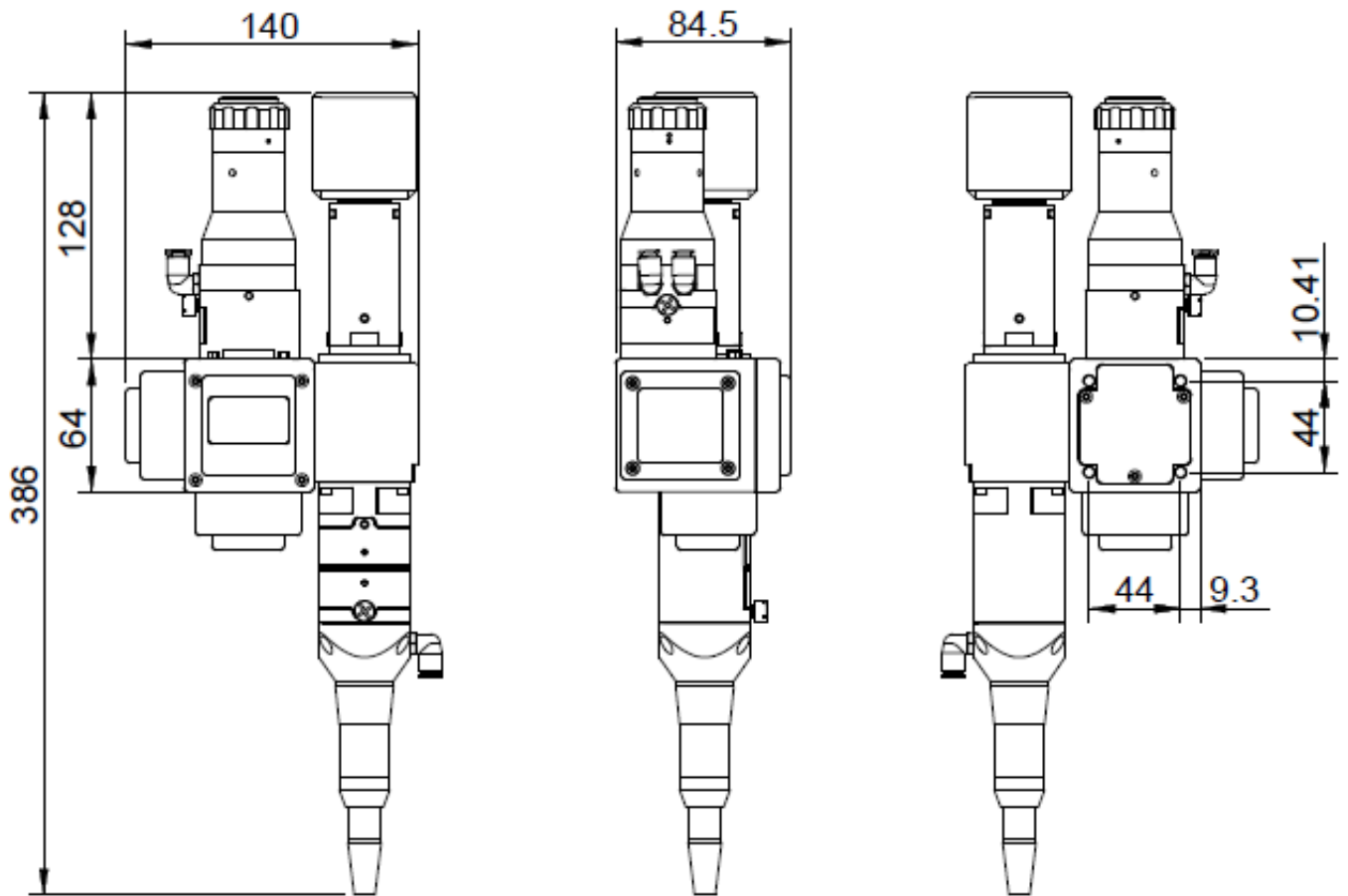
The installation size of the control box is shown in the following figure



The installation size is shown in the following figure



The installation size is shown in the following figure

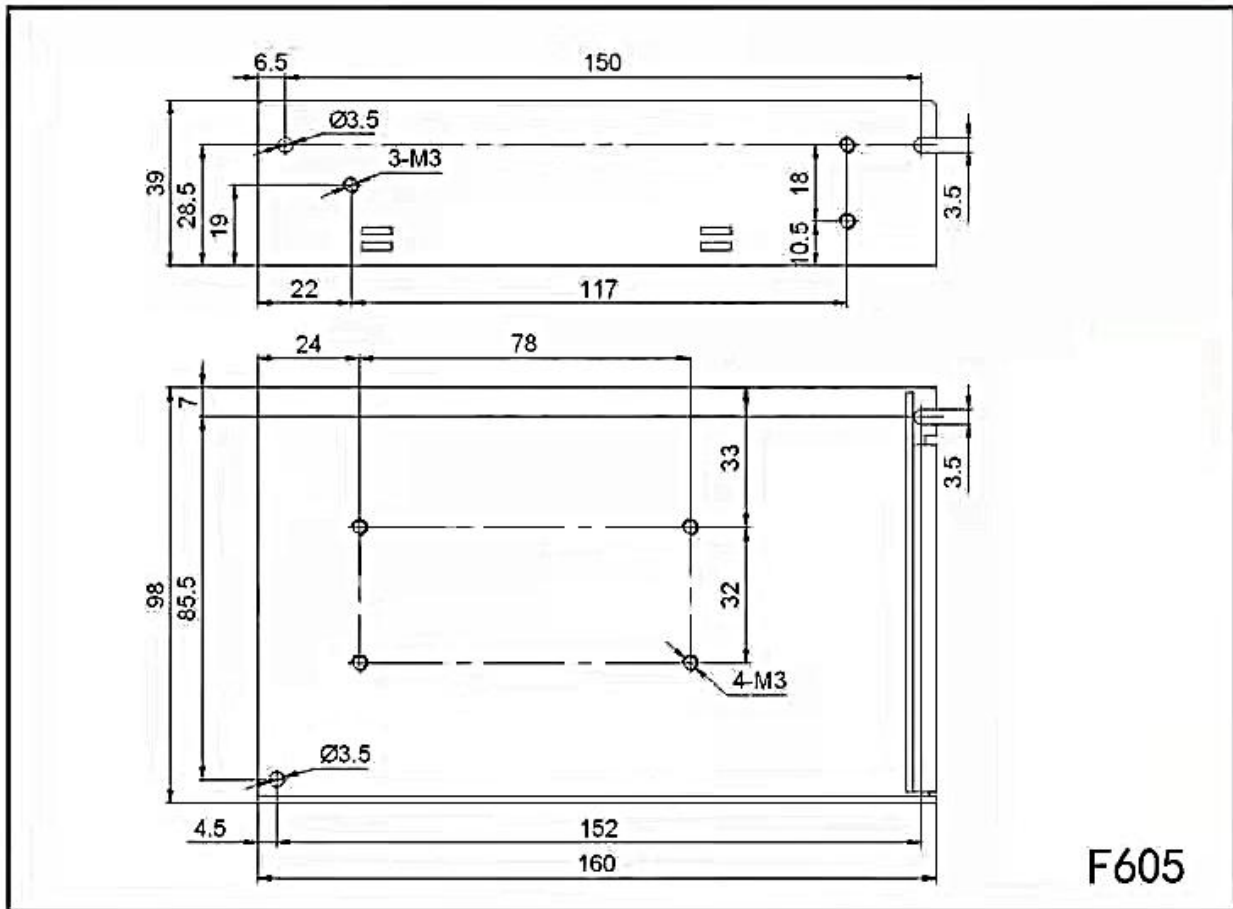


深圳市麒麟激光

### 1.2.3 Installation dimensions of 15 V switching power supply

The installation size of the 15V switching power supply is shown in the following figure

## 安装尺寸图



深圳

# Chapter 2 System wiring

**The main contents of this section are as follows:**

- Control box
- wiring
- Double-pendulum light
- industrial welding head construction
- P ower Interface
- human-computer interface
- HMI
- Laser-decoding interface



- **Double pendulum industrial welding head interface**
- **Urgent stop trigger line**
- **Fan interface introduction**
- **Control interface of the wire feeder**
- **Laser device control interface**
- **Gas control, air pressure detection interface**
- **Alarm signal interface**
- **Robot-signal interface**
- **PNP & NPN conversion board**
- **Alarm lamp interface**

■ Dial switch

深圳市麒麟激光应用科技有限公司

## 2.1 Wiring of the control box

The following figure shows the wiring diagram of the whole system. The system wiring can refer to the schematic diagram and refer to the relevant chapter for detailed interface definition.

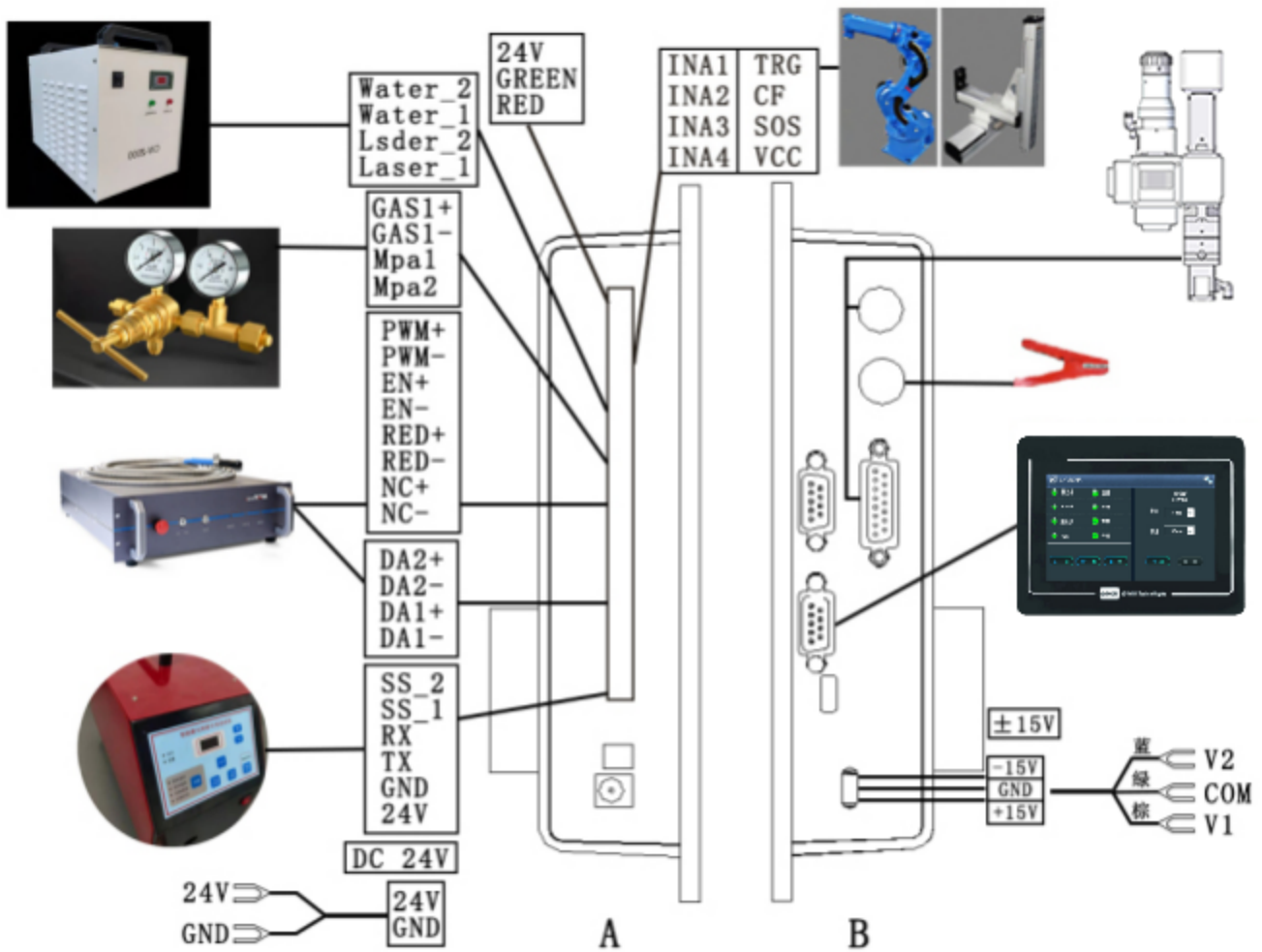


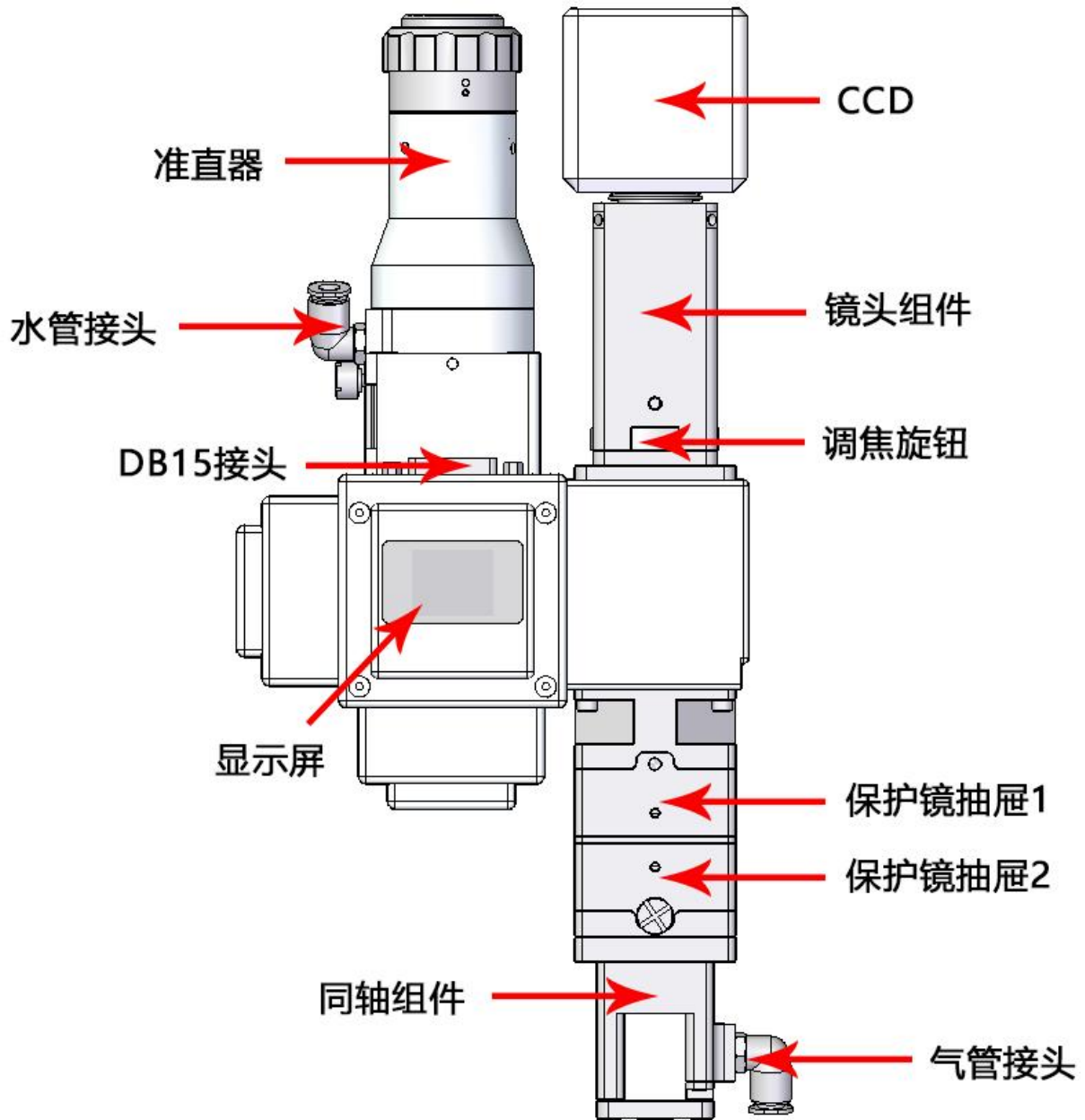
Figure 2.1 Schematic diagram of the system wiring



important:

Do not connect any instructions in the control box to other lines.

## 2.2 Double pendulum light industrial welding head structure



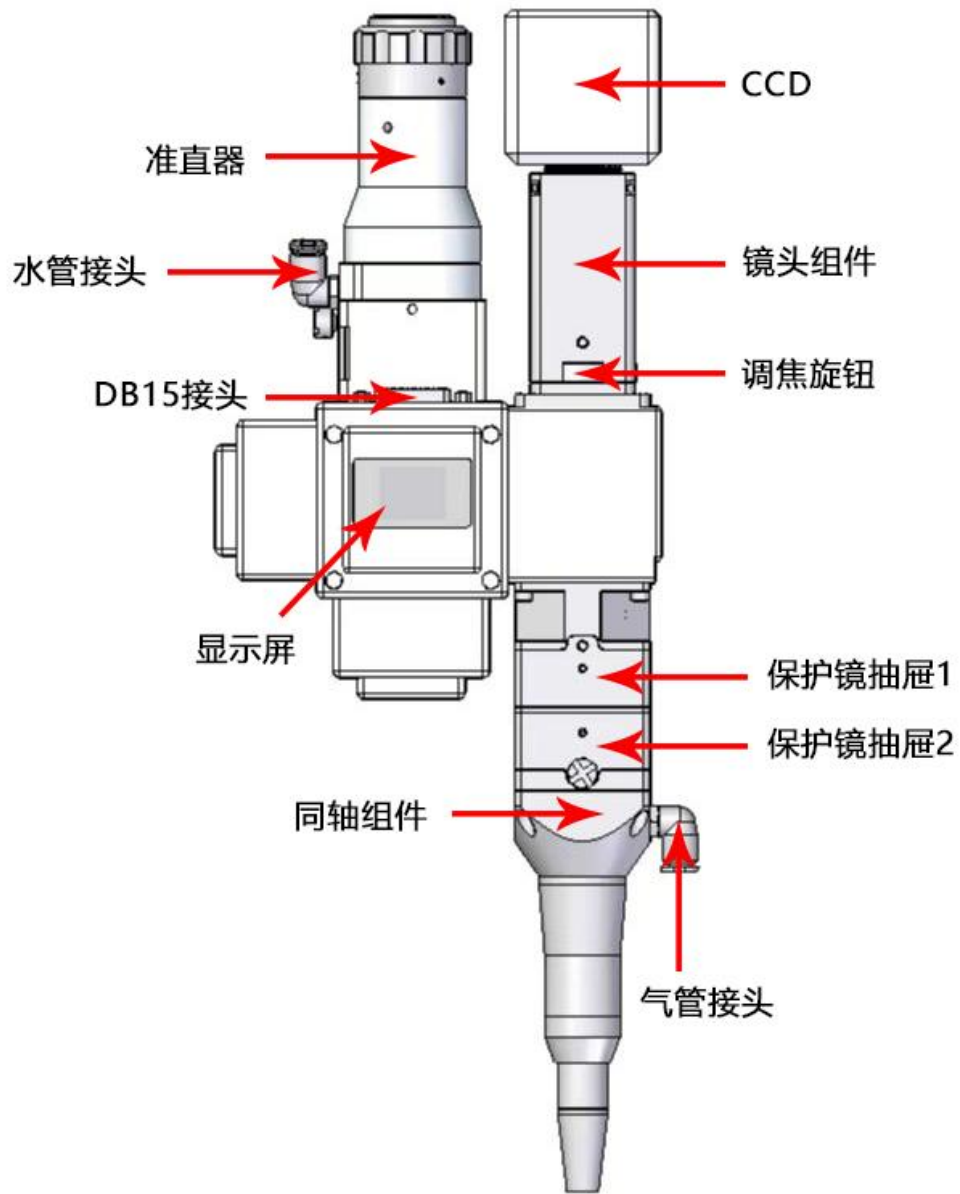


Figure 2.2 Schematic diagram of double pendulum light industrial welding head structure

parameter	scope
interface type	QBH
laser power	3000W
Collar focal length	75
Focus focal length	200
hunting range	The 0- -5mm is adjustable
cooling-down method	Water cooling / air cooling
Applicable wavelength	1064-1080nm
Collimine lens	D30F75
Focus on the lens	D30F200
Reflective mirror	31×28T3
Protection mirror specifications	D30T5
Maximum air pressure support	0.6Mpa
Focus of vertical adjustment range	±15mm
TBM	2.2KG

### 2.3 Power interface



Figure 2.31 Power, interface diagram

 ±15V

+ 15V interface is the interface to provides power for the motor drive inside the control box, the voltage is positive or minus 15V (+ 15V),

深圳市麒麟激光应用科技有限公司

Table 2.31 shows the definition of the + 15V interface power line

**Table 2.31**

pin	signal	definition	explain
1	V1	Power supply input is positive at 15V	+ 15 External power input, external power output The current is greater than 2A
2	COM	Power reference	Power to
3	V2	Power supply input is negative for 15V	-15 External power supply input, external power supply output The current is greater than 2A

The DC24V interface is the interface for providing the power supply for the internal control system of the control box. The DC voltage is 24V (DC24V)

Table 2.32 defines the wiring of the POWER power cord



Figure 2.32 shows the schematic diagram of the POWER 2 power supply line



Table 2.32 shows the definition of the + 24V interface power line

**Table 2.32**



pin	signal	definition	explain
1	24V	power input	+ 24V external power supply input, the output power requirements of the power supply: above 200W, that is, the output current is greater than 8A (wire supply for mechanical and electrical demand)
2	COM	Power reference	Power to

## 2.4 Human-machine interface HMI

The HMI interface is a DB9 black plug through which the motherboard supplies and communicates to the HMI,



Figure 2.4 HMI, schematic diagram

Table 2.4 defines the HMI interface.

Table 2.4

pin	signal	definition	explain
1	24V	Power supply output, 500 mA	HMI supply electricity
2	GND	Power supply output ground	Power reference
3	T XD	The sender of the	Serial port communication with the

		HMI	TXD signal
4	RXD	The receiving end of the HMI	Serial port communication with the RXD signal

## 2.5, the laser decoding interface



LASER RS232 The interface is the board card and the laser communication port.

pin	signal	definition	explain
1	DB 9 (public)	Laser and board card communication interface	Communication with the laser and the decryption function

## 2.6 Double pendulum industrial welding head interface

The motherboard provides a vibrating scope interface, compatible with the common digital lens interface on the market,

Table 2.6 shows the definition of the vibration scope interface.

Table 2.6

pin	signal	definition	explain
1	DB15	Vibrator scope & OLED interface	Control line for communication with industrial welding heads

## 2.7 Emergency stop trigger line

The control box provides a special security trigger signal line interface, which can provide a security guarantee for the operation. Table 2.7 defines for the safety clip interface.

Table 2.7

pin	signal	definition	explain
-----	--------	------------	---------

		on	
1	CF	trigger signal	Light out on trigger (alarm signal green light)
2	SOS	Urgent stop signal	Access the robot emergency stop signal, and stop the light when pressed
3	CON	Robot signal ground	The robot

## 2.8 Introduction of the fan interface

The control box provides a dedicated 24V fan port interface position, independent socket, not easy to insert wrong.



Figure 2.8 Schematic diagram of the fan interface

## 2.9 Control interface of the wire feeder

The control box provides a special communication interface for the control wire feeder, and the 24V power supply is directly connected to the power input end of the control box and can be provided

3A Current, Table 2.9 defines the control interface of the wire feeder.

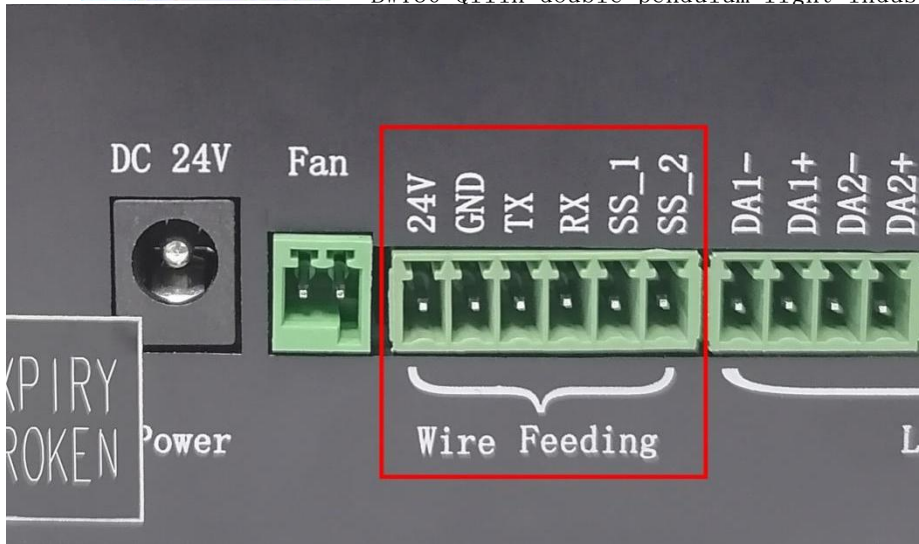


Figure 2.9 Schematic diagram of the control interface of the wire feeder

Table 2.9

pin	signal	definition	explain
1	24V	Power supply output end of wire feeder	Wfeeder 24V + power interface
2	GND	GND	GND
3	TX	Silk feeder and board card communication port	The wire transmitter communicates with the control system on TX signals
4	RX	Silk feeder and board card communication port	The wire feeder communicates the RX signals with the control system
5	SS_1	Wfeeder trigger signal 1	When short circuit SS_1 and SS_2
6	SS_2	Wfeeder trigger signal 2	When short circuit SS_1 and SS_2

## 2.10 Laser control interface

The laser interface is an 8 PIN, green terminal + 4 PIN green terminal

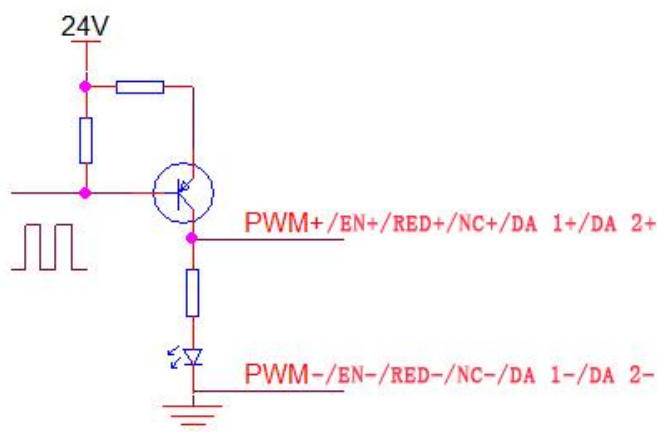


Figure 2.10 Diagram of the laser control interface

Table 2.10 shows the laser interface definition.

Table 2.10

pin	signal	definition	explain
1	PWM+	Laser-modulation signal +	Duty cycle 0% -100% adjustable, 24V and 5V switchable
2	PWM-	Laser Modulated signal-	Reference to the power source
3	EN+	Laser enabling signal +	Control laser light signal, high level effective, 24V and 5V can be switched
4	EN-	Laser-enabling signal-	Reference to the power source
5	RED+	Laser red light signal	Laser red light control (optional)
6	RED-	GND	Reference to the power source
7	NC+	The laser enables the backup port	Laser 24V backup port
8	NC-	Laser backup port ground	Reference to the power source
9	DA 1+	Analog voltage	For laser peak power regulation, 0-

		output +	10V and 0-4V analog voltage selection
10	DA 1-	Analog voltage output-	Reference to the power source
11	DA 2+	Analog voltage output	For proportional valve adjustment, 0-10V analog voltage,
12	DA 2-	GND	Reference to the power source

## 2.10, definition of laser wiring of different manufacturers

控制系统	不同厂家激光器型号												
麒麟系统	热刺 FSC1000/1500/2000/3000	凯普林 500T/1000T/1500T	飞博YDFL-1000-CW	创新MFSC - 1000X/1500X	锐科RFL-C系	锐科RFL-C-X/H	杰普特口 CTRL-INTERFACE						
PWM+	12. MOD SW IN+	21. PWM+	15. GATE	17. 调制输入 +	15. MOD+	15. MOD+	3. 调制+						
PWM-	13. MOD SW IN-	8. PWM-	16. GND IO	4. 调制输入 -	16. MOD-	16. MOD-	16. 调制-						
EN+	5. LASER EN+	19. 使能+	18. EX-EN	18. 使能输入 +	18. Laser EN	18. Laser EN	4. 使能+						
EN-	6. LASER EN-	6. 使能-	20. GND IO	5. 使能输入 -	20. EGND	20. EGND	5. 使能-/报警输出-						
DA1+	14. ANG 0~10V+	15. AD+	12. IFWD SET	15. DA (0-10V) 输入+	12. Analog	12. 0-10V	18. 0-10V+						
DA1-	15. ANG GND-	14. AD-	14. CASE	2. DA (0-10V) 输入-	14. AGND	14. AGND	6. 0-10V-/模拟输入地						
RED+			17. RED-EN		17. Red Laser								
RED-					23. EVCC	24V	17. EVCC	24V					
备注		10. 互锁	短接	1. INTLK1A	短接	19. 互锁+	短接	2. 预留Interlock	短接	2. ITL-A	短接	8. 互锁 1+	短接
		23. 互锁	短接	4. INTLK1B	短接	6. 互锁-	短接	3. 预留Interlock	短接	3. ITL-B	短接	21. 互锁 1-	短接
		12. 互锁	短接	2. INTLK2A	短接			8. 预留远程上电	短接	8. RPA	短接	9. 互锁 2+	短接
		25. 互锁	短接	3. INTLK2B	短接			9. 预留远程上电	短接	9. RPB	短接	22. 互锁 2-	短接
								10. 预留急停	短接				
								11. 预留急停	短接				
				钥匙拧到ON, 开机后等待自检完成按下 START即可								激光器前面板钥匙拧到robot后按下 start即可	

Figure 2.10, Definition of laser wiring of different manufacturers

## 2.11 Gas control and air pressure detection interface

The control box provides a dedicated IO interface, all output IO are using OC output can directly drive the relay, the maximum current can reach

500 mA, the wiring diagram is shown below.



Figure 2.111 Schematic diagram of the gas control interface

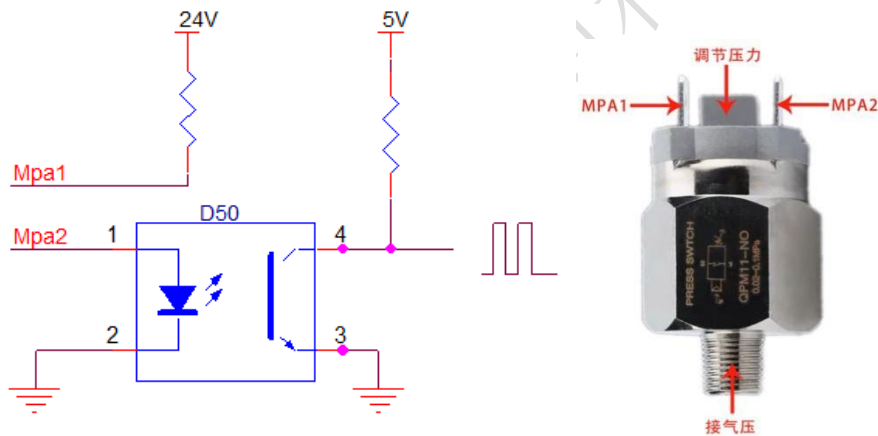


Fig. 2.112 Diagram of pressure detection interface

Table 2.11 defines the gas control interface

Table 2.11

pin	signal	definition	explain
1	CAS 1+	Used to protect the gas blowing control positive electrode	Air valve + board card GAS 1 +
2	CAS 1-	Used to protect the gas to blow the gas to control the negative electrode	Valve-board card GAS 1-
3	Mpa1	Used to detect the air pressure alarm	Air pressure alarm + connecting plate Mpa 1

4	Mpa2	Used to detect the air pressure alarm	Air pressure alarm + connecting plate Mpa 2
---	------	---------------------------------------	---------------------------------------------

## 2.12 Alarm signal interface

Laser1 And 2 are the laser alarm signal interface, not on the green light, on the red light.

Water1 And 2 are the alarm signal interface of chiller, red light.

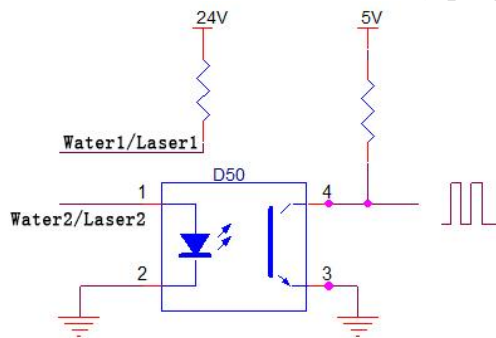


Fig. 2.12, Schematic diagram of the alarm signal interface

Table 2.12 shows the definition of the alarm signal interface

Table 2.12

pin	signal	definition	explain
1	Laser_1	Laser device alarm signal	Short contact during the laser alarm
2	Laser_2	GND	Laser alarm signal ground
3	Water_1	Chiller machine alarm signal	When the chiller alarms, open and break
4	Water_2	GND	Cold water machine alarm

## 2.13 Robot signal interface



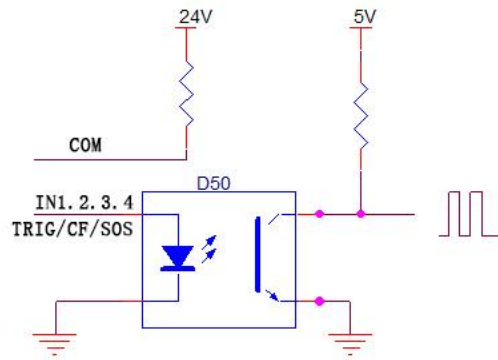


Fig. 2.13 Schematic diagram of the robot control signal

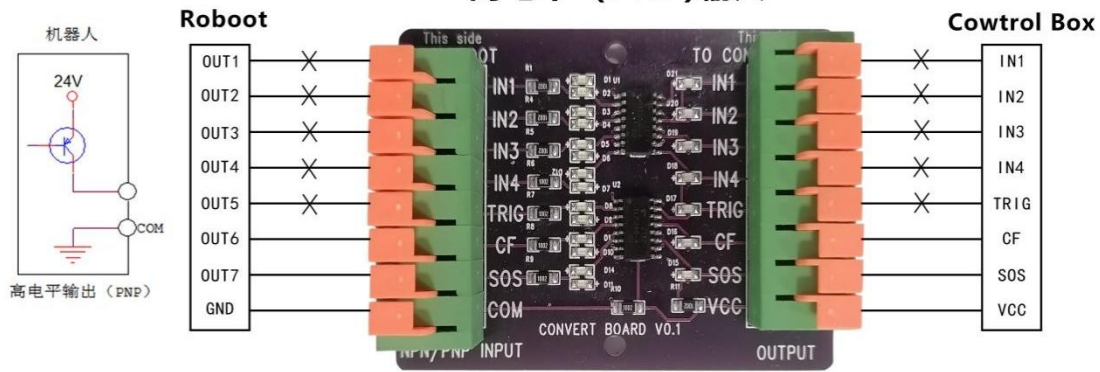
interface

pin	signal	definition	explain
1	IN1	Standby port	Use only when the robot communicates with the PC
2	IN2	Standby port	Use only when the robot communicates with the PC
3	IN3	Standby port	Use only when the robot communicates with the PC
4	IN4	Standby port	Use only when the robot communicates with the PC
5	TRIG	Standby port	Use only when the robot communicates with the PC
6	CF	Light signal	When CF and COM short circuit, light out (if other conditions are reached)
7	SOS	Urgent stop signal	Emergency stop signal input can be set to NC and NO
8	VCC	Shared end	common port.

## 2.14 PNP & NPN conversion board

Each robot output interface on the market is different, usually divided into solid state relay, PNP and NPN output. This conversion board input terminal robot (ROBOOT) (applicable to PNP and PNP), output terminal control box (CONTROL BOX). The wiring diagram is as follows:

### 高电平 (PNP)输入



### 低电平 (NPN)输入

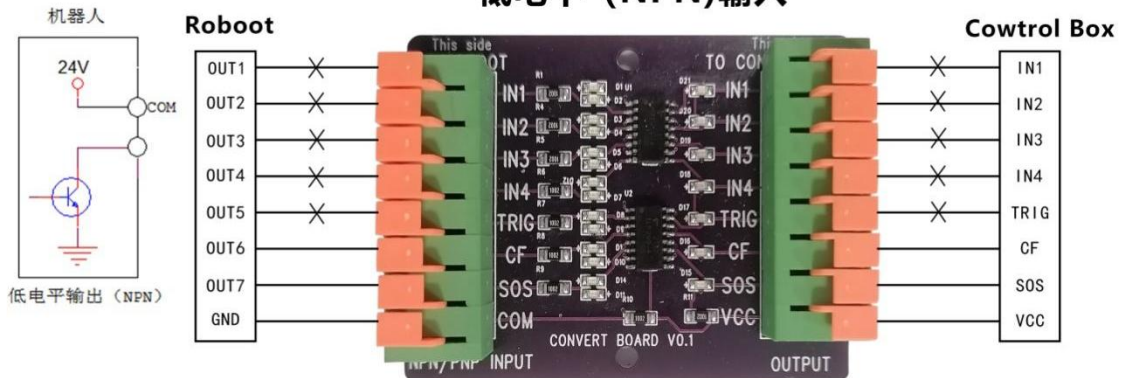


Figure 2.14 Schematic diagram of the PNP & NPN conversion board

## 2.15 Alarm lamp interface

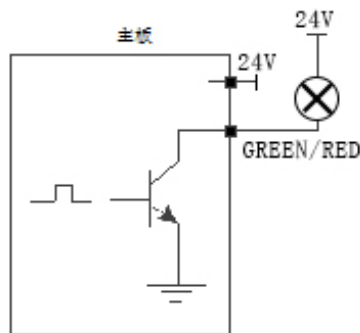


Fig. 2.15 Schematic diagram of the alarm lamp interface

When the RED has voltage, the alarm light is red.

When the alarm is removed, the GREEN has a voltage, and the alarm light is green.

Table 2.15 is the definition of the alarm signal light.

pin	signal	defi niti	expl ain
-----	--------	--------------	-------------

		on	
1	24V	Power supply output end of the alarm signal lamp	Connect to the power supply terminal of the alarm signal lamp
2	GREEN	Alarm signal light-green light	Connect the alarm signal light
3	RED	Alarm signal light-red light	Connect the alarm signal light red

## 2.16, the dial-code switch

order number	characteristic	definition	explain
1	IPG	Laser control signal	PWM, EN, RED, NC output 5V Power adjustment: 0-4V analog voltage adjustable section
2	NO IPG	Laser control signal	PWM, EN, RED, NC output of 24V Power adjustment: analog voltage adjustable section 0-

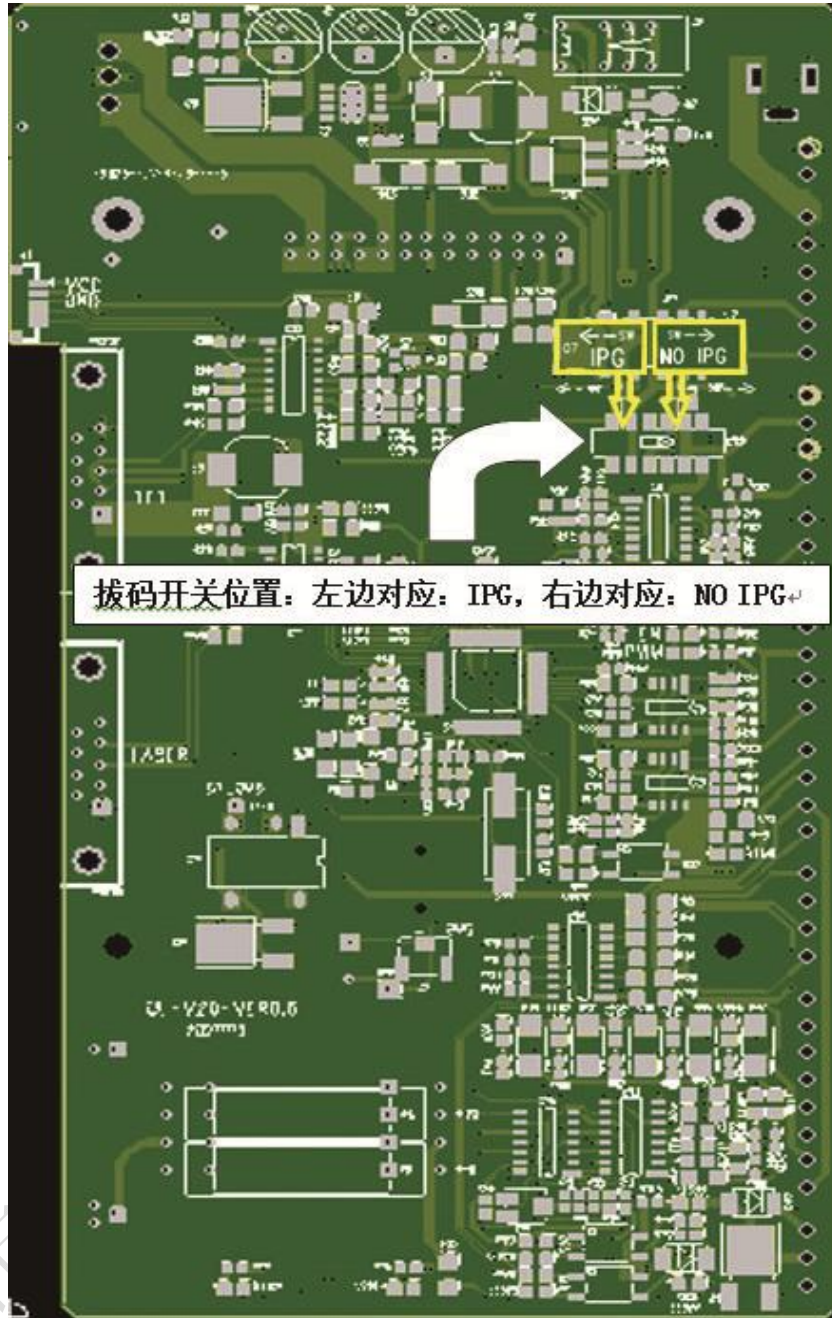


Figure 2.16, schematic diagram of dial switch

# Chapter 3 Human-machine

## interface HMI introduction

**The main contents of this section are as follows:**

- Human-machine interface function and operation introduction

The wire delivery structure is installed and used

### 3.1 Human-machine interface function and operation introduction

#### Introduction of the main interface function and operation

The operating panel of Qilin double pendulum light industrial welding system adopts 7-inch configuration capacitor touch screen, which is dignified, generous and easy to operate. The relevant parameters of the laser and laser swing head can be set respectively, and the light mode can be controlled. At the same time, the process parameters stored inside the machine can be selected on the main interface, and at the same time, these art parameters can be adjusted and saved, facilitating the subsequent direct call, and the process package can also be customized.



3.1 Schematic diagram of the main interface 1

Light lock: the light switch is open to the normal light.

Gas: When the gas opens, the gas valve port will output 24V voltage, no need to open the gas, welding will automatically blow gas.

Wire sending: when the wire sending is opened, the wire sending opportunity is to send the wire when the light is out, and when the wire sending is closed, the wire sending machine is not controlled by the signal such as welding torch.

Alarm signal light: provide real-time monitoring and reminder, monitor and alarm the



temperature of laser head, air pressure, welding torch, conduction and handle. The full alarm state is displayed synchronously on the main screen and alarm light to remind users and quickly check problems.

Process package: The process package has four common materials, and the thickness and parameters corresponding to "custom" and "other" are described as follows:

Stainless steel (SUS): "SUS/1.0mm" means: stainless steel 1.0mm, and so on: "SUS/3.5mm" means: stainless steel 3.5mm

Carbon steel (CS): "CS/1.0mm" means: carbon steel 1.0mm, and so on: "CS/3.5mm" means: carbon steel 3.5mm

Galvanized plate (SECC): "SECC/1.0mm": galvanized plate 1.0mm, and so on: "SECC/3.5mm": galvanized plate 3.5mm

Aluminum plate (AL): "AL/1.0mm": aluminum plate 1.0mm, and so on: "AL/3.5mm" means: aluminum plate 3.5mm

Custom (UDC): can edit the parameters, convenient for customers to access the process for welding at any time.

Other (OTS): internal manufacturer special process editing, special process can be used for special material welding.

编辑

Click "" to enter the main editing interface. After editing parameters, you can save the parameters without clicking confirmation.



Schematic diagram of editing the main interface

#### Laser control:

Power: Set the peak power of the laser at welding.

PWM frequency: Set the frequency of the laser PWM modulation signal. Duty cycle:

Set the pulse width of the laser PWM modulation signal.

#### Laser head control:

Mode: Set the motor swing mode.

Frequency: Set the speed of the motor to swing.

Width: Set the width of the motor to swing.

#### Out-of-light control:



Mode: Continuous light out

mode and pulsed light mode.

**Light time: set light time.**

Light output interval: set,

the interval of each light

output.

Restore the factory Settings: After entering the editing page, restore the single page parameters.



Press the "+" on the main interface to enter the setting interface, as shown in the figure below



parameter setting:

gas control:

Advance quantity: when starting processing, it can be set.

When the external start button is pressed, the air blow delays for a period of time, and then the laser starts.

Delency: When stopping processing, the delay gas can be set. When the processing is stopped, the laser output is stopped first, After a time delay, then stop blowing.

Proportional valve: if the equipment has a proportional valve, control the size of the protective gas.

**Start lift:**

Slow rise time: the laser power slowly reaches the peak power after the set slow rise time.

Slow descent time: After the laser power is turned off, the laser energy is slowly turned off.

Light off delay: When the laser is closed for 100ms, there is a full power input of 100ms to optimize the wire breaking function.

Graph rotation angle: Make the swing mode 360° direction adjustable.

**Red light offset setting:**

Red light offset setting: When the red light is not in the center position of the nozzle, it can be adjusted through the red light offset setting position of X and Y coordinates.

Start correction: save the set offset parameters to the system and zero the display coordinates.

Clear correction: Clear the set offset parameters and clear the display coordinates.

**SN and language settings:**

**System SN identification code: Product Serial number.**

Firmware version: It means the version currently used by the system.

Available period (days): Available period, all functions are invalid after expiration. (Automatic reminder within 7 days)

Registration code: used for decryption. After receiving the registration code, enter and click confirm to decrypt.

Language: English, Russian, Korean, Vietnamese, Japanese, Chinese

## Process Package of Reference Parameters:

	1500W laser control				Laser head control		
order number	Material and thickness	power	frequency	duty cycle	pattern	frequency	width
1	Stainless Steel 1.0	30%	3000HZ	100%	○	10hz	1.6mm
	Stainless Steel 2.0	60%	3000HZ	100%	△	10hz	2.6mm
	Stainless Steel 3.0	90%	3000HZ	100%		10hz	3mm

2	Carbon steel 1.0	30%	3000HZ	100%	○	10hz	1.6mm
	Carbon steel 2.0	60%	3000HZ	100%	△	10hz	2.6mm
	Carbon steel 3.0	85%	3000HZ	100%		10hz	3mm
3	Galvanized plate 1.0	35%	3000HZ	100%	○	16hz	1.6mm
	Galvanized plate 2.0	65%	3000HZ	100%	△	16hz	2.6mm
	Galvanized plate 3.0	85%	3000HZ	100%		16hz	3mm
4	Aluminum plate 1.0	40%	3000HZ	100%	○	10hz	1.6mm
	Aluminum board 2.0	70%	3000HZ	100%	△	8hz	2.6mm
	Aluminum board 3.0	85%	3000HZ	100%		8hz	3mm

The above parameters are provided for your reference only

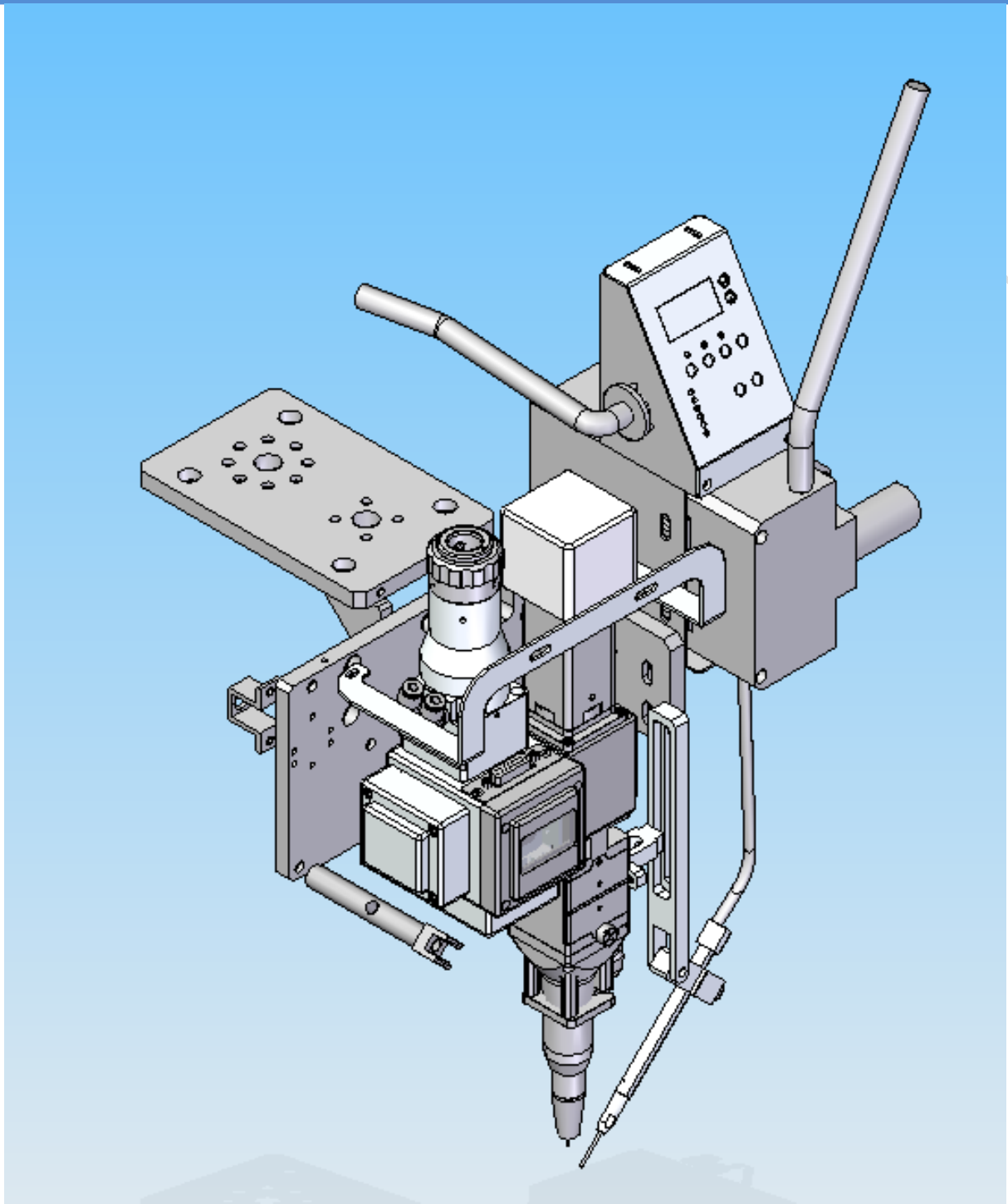
Description: For different lasers, other parameters in the process package parameters remain unchanged, only the power modification, can be set according to this formula:

When selecting 1000W laser:  $P(1000W \text{ laser}) = P(1500W \text{ laser}) * (1000 / 1500)$

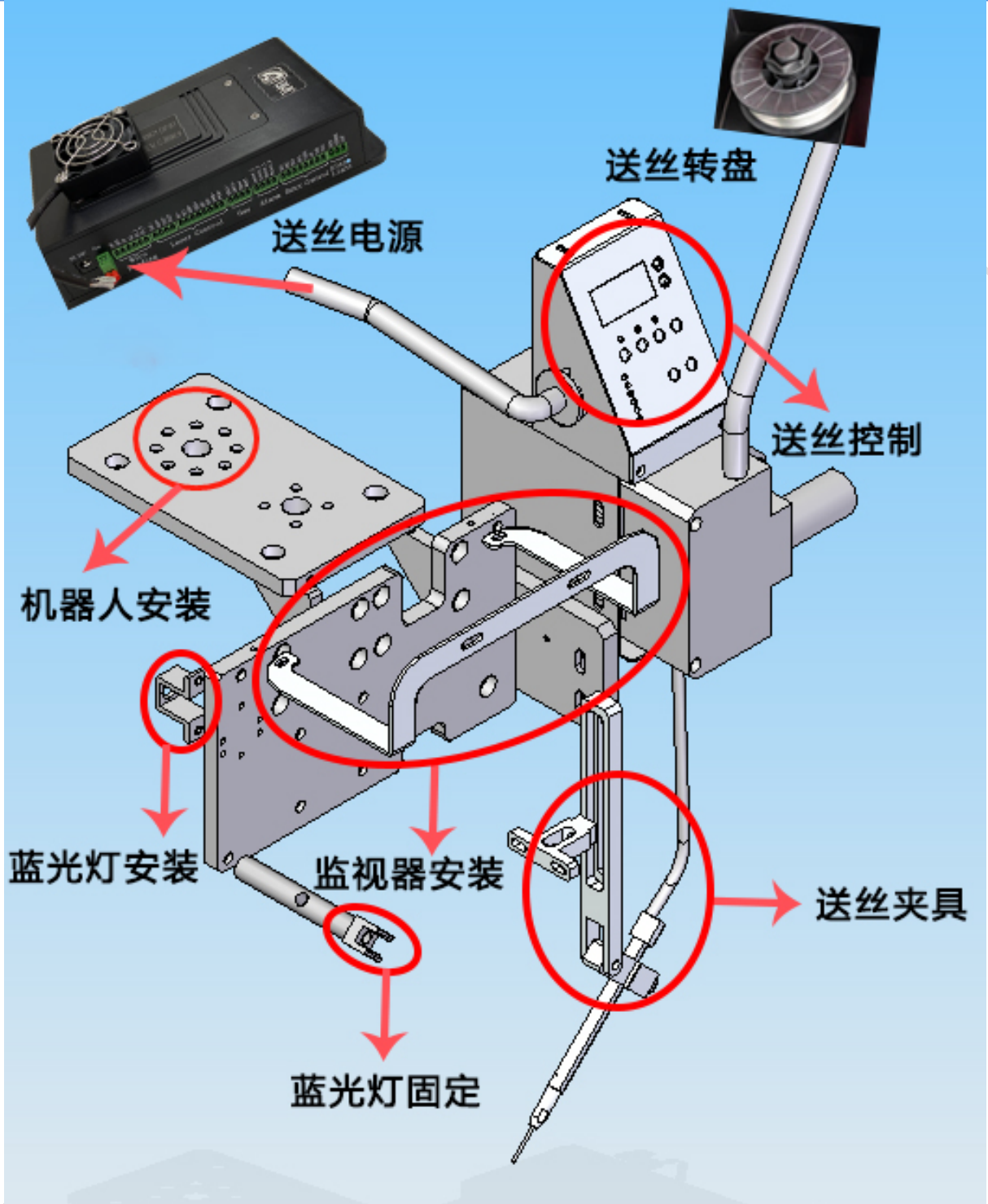
When selecting 2000W laser:  $P(2000W \text{ laser}) = P(1500W \text{ laser}) * (2000 / 1500)$

### 3.2 Installation and use of the wire supply structure

SST 30 Installation diagram:



Note: The SST 30 wire clamp is installed as follows



## Use the laser welding system precautions

1. The light double pendulum industrial welding head contains lasers, water cooler,

- laser welding system and laser welding head. In order to avoid interference, ensure that the argon arc welding machine and related equipment with large interference, and ensure that the safe distance is kept at more than 5 meters. Ensure that the laser welding machine has independent space when conditions permit.
2. In order to reduce equipment leakage or static electricity, ensure the use of light double pendulum industrial welding head equipment.
  3. Please repeatedly confirm whether the cable joint is connected and locked normally. After locking, it can be wrapped with insulation tape.
  4. Check whether the laser head and the optical fiber are locked and connected. After confirming that it is normal, the beautiful strip tape can be sealed and wound to ensure that the dust does not enter the laser head cavity.
  5. Check whether there is water seepage in the cavity and many waterways in the cavity. Do not loosen screws without professional training to prevent water droplets from entering the cavity.
  6. Check whether the protective lens drawer is normal, ensure that the sealing ring is normal and effective, when replacing the protective lens, ensure that the alcohol wipes the external stains of the laser head, at least 5 times, and ensure that the lens environment is clean and clean before the lens is replaced.
  7. The laser head is so complex. To avoid short circuit, stay away from the water source and make sure that no liquid can be sprayed on the laser head.
  8. Laser head refuses to use strong wind to blow and clean the laser head, and can only be wiped with alcohol and dust-free cloth.

9. The laser head is installed with a digital motor. When used, it must be put gently to prevent motor failure.
10. When the laser head is not used, please use the system gas blowing air for many times to discharge the dust, and remove the copper nozzle, use the sealing tape to seal, and use the copper nozzle to blow the air more than 2 times before using it.
11. Continuous interruption of power supply will cause damage to the welding control system, if the external wire transmitter, 24V power supply, please provide 200W (power voltage 24V, output current is equal to or greater than 8A) above the reliable power supply!
12. The external safety lock is 24V high level, do not short connect with the aviation plug GND shell of the system cable, or do not pay attention to collide with each other when installation, otherwise the short circuit may burn the power supply or the main control board.

#### Quality assurance description:

The warranty period of this product is 12 months, starting from the date of factory. If the product is faulty during the warranty period, it can be sent back

Our company, free maintenance, free of labor costs. All lens categories (e. g. collimated lens, focusing lens, mirror, cover

Protection lens, motor lens, etc.), appearance parts (cavity and handle, etc.) and consumables (copper nozzle, stainless steel pipe, and other easy to lose

Product) is not in the warranty scope.



All parts of this description, the property right of the book belongs to Shenzhen Qilin Laser Application Technology Co., LTD. Without the permission of the Company, any unit or individual shall not reprint, copy or spread the relevant content of this product description, if the content and information of this product will be changed without notice.

If you have any comments or suggestions on the product and instructions during use, please call for consultation. Tel.:

18018735163

Fax: 0755-27999931

Address: Building 8, Fanmao Industrial Zone, Shuiyin Road,  
Gongming Street, Guangming District, Shenzhen

Thank you for using the products of Shenzhen Qilin Laser Application Technology Co., LTD.!